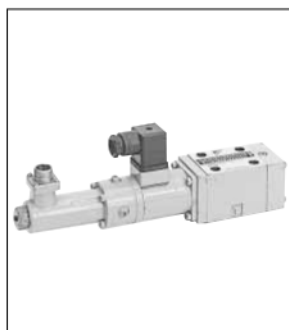
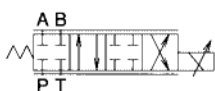


Direct type servo valve



JIS symbols



Features

- In combination with exclusive driver, it can have a high response and suits the closed loop controls of position, speed and pressure for a main machine's actuator. (Frequency response: 130Hz/-3dB±10% amplitude)
- Since a proportional solenoid directly drives a spool, the leak volume can keep a least value compared to a nozzle flapper type servo valve.
- When an exclusive driver is used, it becomes all port block (fail safe function) at power off.

Specifications

Model code	Max. operating pressure MPa {kgf/cm ² }	Rated flow rate ★1 L/min	T-port permissible back pressure MPa {kgf/cm ² }	Pressure gain	Hysteresis resolution power repeated characteristics	Solenoid rated voltage v	Max. current mA	Weight kg
KSPS-G02-1*-10	35 {350}	10	2.5 {25}	1 type: 2% or less 2 type: 4% or less	1% or less	DC12	1700	2.5
KSPS-G02-2*-10		20						
KSPS-G02-4*-10		40						
KSPS-G02-1*-10-E		10	16 {160}					
KSPS-G02-2*-10-E		20						
KSPS-G02-4*-10-E		40						

Note) ★1 The rated flow rate is the one at 1 land differential pressure: $\Delta P = 3.5 \text{ MPa } \{35 \text{ kgf/cm}^2\}$.